

2.1.6.2.1 DELTA PLC Programmable Logic Controller เดลต้า รุ่น AH500



- Modularized Hardware Structure, Highly Integrated Software
- Highly integrated software ISPSOFT: Graphical Interface with 5 programming languages
- Enhanced flexibility: Max. 100m between 2 local extension racks
- Improved maintainability: Hot-swapping function keeps the system running

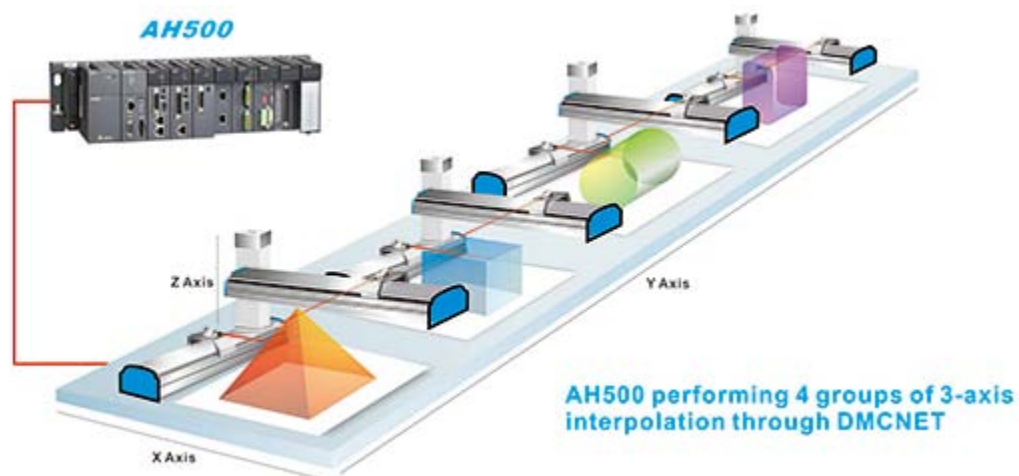
ประเภทสินค้า : PLC, Delta

Series: AH500 series

การใช้งาน

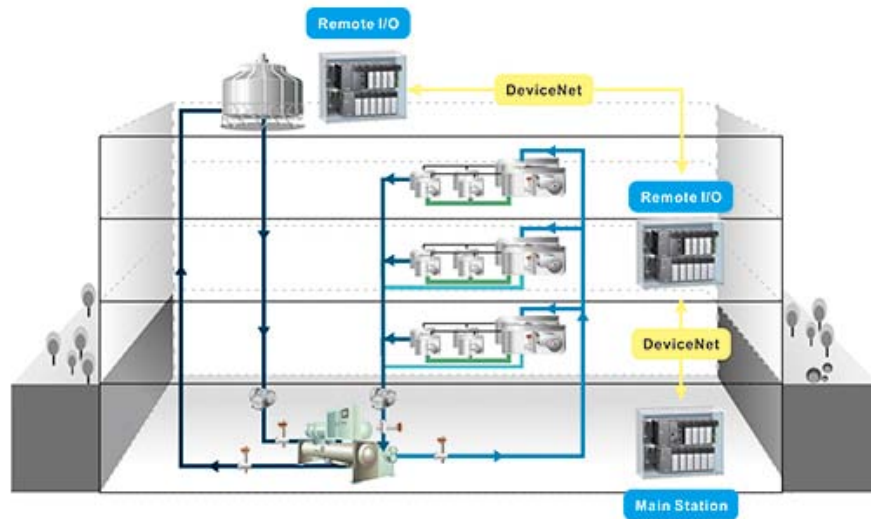
Large Scale Industrial Machines

The AH500 supports excellent motion control functions including 3-axis linear interpolation, 2-axis arc interpolation, and 3-axis helical interpolation. In addition, the AH500 is capable of controlling up to 12 axes or 4 groups of 3-axis interpolation synchronously at 1ms through Delta's high speed DMCNET motion control network. The AH500 satisfies requirements for complex processing or precise motion control and is effective for applications such as building material processors, warp knitting machines and food packaging machines.



System Applications

The AH500 is a modular system controller designed for almost all types of high-level automation tasks. Its abundant selection of I/O modules and the flexible system structure provide the best solutions for all kinds of system integration requirements. Through remote I/O expandability, you can build up the AH500 main station as a central control system and allocate the remote I/O systems on different floors for HVAC applications, or in different processing stations for the paper-making industry. The AH500 not only fulfills the application requirements for industrial machines or devices, but it also provides total solutions for automation systems.



ข้อมูลทางเทคนิค

Specifications

- Utilizes dual-core multi-tasking processor
- Excellent program execution speed: 0.3ms / 1k steps
- Max. I/O points:
 - DIO: Max. 4,352 points
 - AIO: Max. 544 channels
 - RIO: Max. 125,440 digital points / 3,920 analog channels
- Program capacity: Max. 256k steps
- Data register: Max. 64k words
- CPU built-in with fully isolated RS-232/422/485, Mini-USB, Ethernet, SD Card 1.0 (compatible with the memory cards on the market)
- Abundant selection of AIO modules, DIO modules, temperature modules, network modules, pulse-train and DMCNET motion control modules